

**B+BTEC**

**ICCONS®**

**KARAT**  
**FB750W**



**Cuts  
Through  
The Hardest  
Tiles**

4mm to 68mm

# ***Tile Drilling & Cutting Solutions***

*In Porcelain Tiles/ Ceramic Tiles/ Natural Stone & Sanitary Ware*



**DUSTLESS DRILLING**

[www.iccons.com.au](http://www.iccons.com.au)

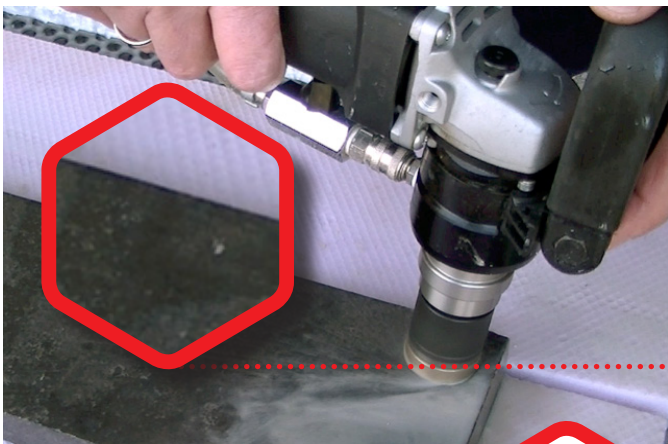




- Powerful 750w variable speed angular tile drill for the hardest tiles



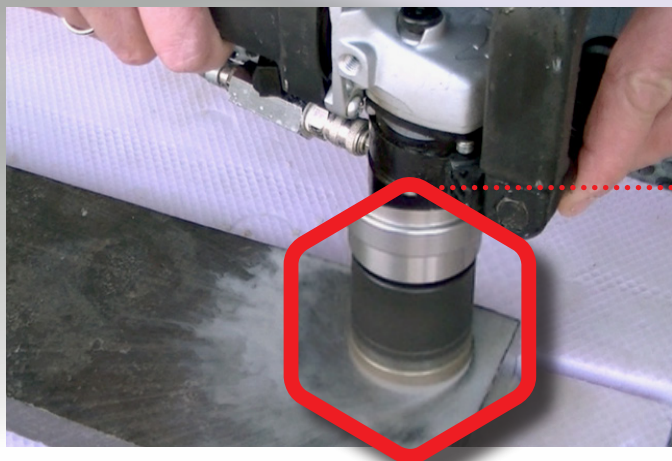
- Accurate chip free cutting



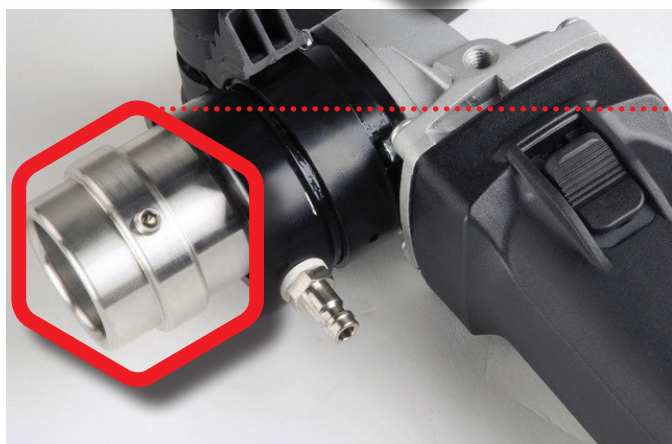
- For Porcelain Tile, Ceramic Tile, Natural Stone & Sanitary Ware



- Long lasting bits
- Diamond height: 10 mm segments



- Superior drilling speed



- Angular tile drill



- Water collection accessories available

**IDEAL FOR:**

*Tilers*

*Plumbers*

*Electricians*

*Cabinet makers*

*Stone masons*

*Facade fixers*

*Tactile installers*

*Sanitary ware manufacturing*

**B+BTEC**



# DUSTLESS DRILLING

**B+BTEC**  
**KARAT**



## FB750W

**For up to 68mm bits**

### FB750W Powerful 750W

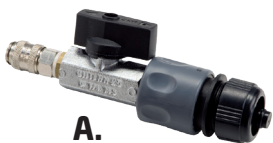
Angular Tile Drill for Ceramic Tile, Natural Stone & Sanitary Ware

- Accurate Chip Free cutting of the Hardest Tile & Stone
- For Wet Use with Premium Diamond Tile Bits up to 68 mm.
- Superior Drilling Speed
- Variable Speed

### What's in the Box

- FB750W Angular Tile Drill
- GFCI Switch
- Adjustable Drilling Guide
- Water Supply Tank
- Ergonomic Side Grip
- Carrying Case
- Operating Manual

Part#	DTFB750W-KIT (200.026)
Power:	750W
Voltage:	230V
Frequency:	50Hz
No Load Speed	3,000 - 10,000 rpm
Bit Range:	Ø 4 - 68 mm
Weight:	2.6kg
Water Tank Volume:	5 Litres



**A.**



**B.**

## FB750W Accessories

	Part No.	Description	qty
<b>A</b>	DTBAWH	<b>FB750W - Adapter to water hose (026.057)</b> To connect the UDK to the water mains instead of the supplied water pressure tank. Recommended for larger bit diameters. Includes waterhose coupling.	1
<b>B</b>	DTBVSCC	<b>FB750W - Cobra water slurry collector (210.0047)</b> Attaches to wet vacuum to collect water & slurry	1



- Accurate Chip Free cutting of the Hardest Tile & Stone
- Silica Dust Free
- For Wet Use on FB750W and UDK68 Tile Drilling Systems
- Unparalleled Drilling Speed
- Diamond Height: 10 mm

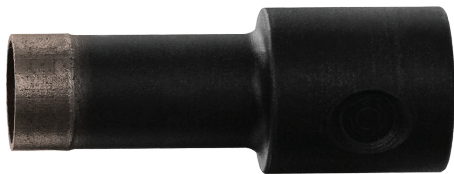
**Phenomenal Improvement in Drilling Performance**

PREMIUM QUALITY Diamond Tile Bits offer the latest in Diamond Bit Technology and are unparalleled in Drilling Speed & Quality. Furthermore they offer an amazing Bit Life.

The range covers all common diameters from 4 mm up to 68 mm.

These Premium Quality Diamond Core Bits are an integral part of the Tile Drill system.

**NEW**



Part No.	Description	mm	qty
DTB004	Tile Bit Premium 4mm (4.000.504)	4	1
DTB005	Tile Bit Premium 5mm (4.000.505)	5	1
DTB006	Tile Bit Premium 6mm (4.000.506)	6	1
DTB008	Tile Bit Premium 8mm (4.000.508)	8	1
DTB010	Tile Bit Premium 10mm (4.000.510)	10	1
DTB012	Tile Bit Premium 12mm (4.000.512)	12	1
DTB013	Tile Bit Premium 13mm (4.000.513)	13	1
DTB014	Tile Bit Premium 14mm (4.000.514)	14	1
DTB016	Tile Bit Premium 16mm (4.000.516)	16	1
DTB018	Tile Bit Premium 18mm (4.000.518)	18	1
DTB020	Tile Bit Premium 20mm (4.000.520)	20	1
DTB024	Tile Bit Premium 24mm (4.000.524)	24	1
DTB026	Tile Bit Premium 26mm (4.000.526)	26	1
DTB028	Tile Bit Premium 28mm (4.000.528)	28	1
DTB032	Tile Bit Premium 32mm (4.000.532)	32	1
DTB035	Tile Bit Premium 35mm (4.000.535)	35	1
DTB040	Tile Bit Premium 40mm (4.000.540)	40	1
DTB045	Tile Bit Premium 45mm (4.000.545)	45	1
DTB051	Tile Bit Premium 51mm (4.000.551)	51	1
DTB060	Tile Bit Premium 60mm (4.000.560)	60	1
DTB068	Tile Bit Premium 68mm (4.000.568)	68	1





## RAPTOR® Single Row Grinding Cups

**For Non-Abrasive Material** - Suitable applications: Cured Concrete / Reinforced, Clay Bricks, General Masonry Products.

- Designed for flat grinding.
- Ideal for removal of concrete imperfections.
- Long life in non-abrasive material.
- Dry grinding.



Part No.	Description	Inches	mm	mm	qty	qty
<b>IGSR100</b>	Grinding Cup For Concrete	4	100	16 / 22.2	1	25
<b>IGSR115</b>	Grinding Cup For Concrete	4.5	115	22.2	1	25
<b>IGSR125</b>	Grinding Cup For Concrete	5	125	22.2	1	25
<b>IGSR178</b>	Grinding Cup For Concrete	7	178	22.2	1	10

Not recommended for abrasive materials such as green concrete, asphalt, cement block etc. as extreme premature wear will occur



## RAPTOR® Double Row Grinding Cups

**For Non-Abrasive Material** - Ideal for removal of concrete imperfections, trimming of concrete after removal of Formwork, Cured Concrete / Reinforced, Clay Bricks, General Masonry Products.

- Long life in non-abrasive material.
- Smooth finish.
- Designed for flat grinding.
- Dry grinding.



Part No.	Description	Inches	mm	mm	qty	qty
<b>IGDR100</b>	Grinding Cup For Concrete	4	100	16 / 22.2	1	25
<b>IGDR115</b>	Grinding Cup For Concrete	4.5	115	22.2	1	25
<b>IGDR125</b>	Grinding Cup For Concrete	5	125	22.2	1	25
<b>IGDR178</b>	Grinding Cup For Concrete	7	178	22.2	1	10

Not recommended for abrasive materials such as green concrete, asphalt, cement block etc. as extreme premature wear will occur.



## RAPTOR® Radial Grinding Cups

**For Non-Abrasive Material** - Removal of paint and / or glue from concrete surface, ideal for removal of concrete imperfections, Cured Concrete / Reinforced, Clay Bricks, General Masonry Products.

- Fast stripping of paint / glue from concrete.
- No clogging.
- Long life in non-abrasive material.
- Dry grinding.



Part No.	Description	Inches	mm	mm	qty	qty
<b>IGR100</b>	Grinding Cup For Concrete	4	100	16 / 22.2	1	25
<b>IGR115</b>	Grinding Cup For Concrete	4.5	115	22.2	1	25
<b>IGR125</b>	Grinding Cup For Concrete	5	125	22.2	1	25
<b>IGR178</b>	Grinding Cup For Concrete	7	178	22.2	1	10

Not recommended for abrasive materials such as green concrete, asphalt, cement block etc. as extreme premature wear will occur



## RAPTOR® Turbo Style Grinding Cups

**For Non-Abrasive Material** - Perfect for shaping concrete / stone, ideal for removal of concrete imperfections, Cured Concrete / Reinforced, Pavers, Clay Bricks, General Masonry Products.

- Turbo style segment.
- Double layer for better cooling.
- Long life in non-abrasive material.
- Dry grinding.



Part No.	Description	Inches	mm	mm	qty	qty
<b>IGT100</b>	Grinding For Pavers, Concrete	4	100	16 / 22.2	1	25
<b>IGT115</b>	Grinding For Pavers, Concrete	4.5	115	22.2	1	25
<b>IGT125</b>	Grinding For Pavers, Concrete	5	125	22.2	1	25
<b>IGT178</b>	Grinding For Pavers, Concrete	7	178	22.2	1	10






Not recommended for abrasive materials such as green concrete, asphalt, cement block etc. as extreme premature wear will occur.



## RAPTOR® Continuous Rim Blades Porcelain / Ceramic Tiles

Suitable for: Porcelain, Ceramic Tiles, Marble, Granite, Vitrified Tiles, Glazed Tiles, Slate.

- Ultra-thin fast cut blade.
- Continuous rim - less chipping.
- Expansion slots for better cooling.
- 10mm segment height.
- High concentration of quality diamonds.
- Long life in non-abrasive material.
- Bore resize bushes - Press fit.
- Permanent Directional arrow cut out.
- Wet / Dry use.

Part No.	Description					
		Inches	mm	mm	qty	qty
ICR100	Suitable for Porcelain, ceramic & marble	4	105	16 / 20 / 22.2	1	5
ICR125	Suitable for Porcelain, ceramic & marble	5	125	22.2	1	5
ICR200	Suitable for Porcelain, ceramic & marble	8	200	22.2	1	5

Not recommended for abrasive materials such as green concrete, asphalt, cement block etc. as extreme premature wear will occur. See selection chart on page 186 for detailed compatibility.



## RAPTOR® Turbo Rim Thin Series Ceramic / Porcelain Tiles

Suitable for: Porcelain, Ceramic Tiles, Marble, Granite, Vitrified Tiles, Glazed Tiles, Slate.

- Ultra-thin Turbo fast cut blade.
- Raised boss for superior strength and grip behind - Flanges.
- 10mm segment height.
- High concentration of quality diamonds.
- Turbo design for superior cooling.
- Long life in non-abrasive material.
- Bore resize bushes - Press fit.
- Permanent Directional arrow cut out.
- Wet / Dry use

Part No.	Description					
		Inches	mm	mm	qty	qty
ITT100	Suitable for Porcelain, ceramic & marble	4	105	16 / 20 / 22.2	1	5
ITT125	Suitable for Porcelain, ceramic & marble	5	125	22.2	1	5

Not recommended for abrasive materials such as green concrete, asphalt, cement block etc. as extreme premature wear will occur. See selection chart on page 186 for detailed compatibility.



## ICCONS® PTY LTD

VICTORIA - HEAD OFFICE  
12-18 Produce Drive,  
Dandenong South, Vic, 3175  
P: **03 9706 4344**  
F: **03 9768 3329**  
E: **info@iccons.com.au**

NSW Branch  
Unit A, 17 Seddon Street,  
Bankstown,  
New South Wales, 2200  
P: **02 9791 6869**  
F: **02 9790 8404**  
E: **salesnsw@iccons.com.au**

QLD Branch  
42-44 Nealdon Drive  
Meadowbrook,  
Queensland, 4131  
P: **07 3200 6455**  
F: **07 3299 7548**  
E: **salesqld@iccons.com.au**

S.A Branch  
15 Light Terrace, Thebarton,  
South Australia, 5031  
P: **08 8234 5535**  
F: **08 8354 4689**  
E: **salessa@iccons.com.au**

W.A. Branch  
90 Christable Way, Landsdale,  
Western Australia, 6065  
P: **08 6305 0008**  
F: **08 6305 0011**  
E: **saleswa@iccons.com.au**

NORTHERN TERRITORY  
Unit 2, 14 Menmuir Street,  
Winnellie,  
Northern Territory 0820  
P: **08 8947 2758**  
E: **salesnt@iccons.com.au**

NEW ZEALAND  
Sesto Fasteners  
5E Piermark Road, Albany,  
Auckland,  
New Zealand 0630  
P: **+64 027 526 6403**  
E: **sestofasteners@gmail.com**

ICCONS (Thailand) Co. Ltd.  
55 Phetkasem 62/3, Bangkhae,  
Bangkok 0160  
P: **+ 66 2 801 0764**  
F: **+ 66 2 801 0764**  
M: **+ 66 8 1 710 8745**  
E: **icconsthailand@hotmail.com**

# ICCONS®

